



DREHER
PRÄZISIONSDREHTEILE GMBH

Case Study No.4

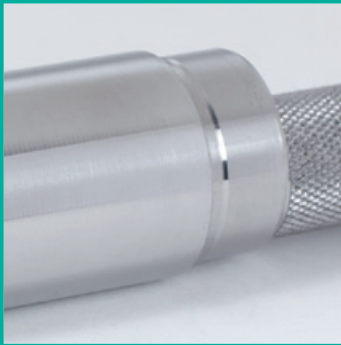
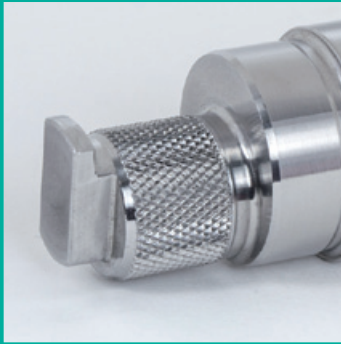
Precision machined parts. The difficult. The impossible. All of them.

HEAT AND STEEL

www.dreher-cnc.de

HEAT AND STEEL

Case Study No.4



We are deeply immersed in the metalworking tradition of our region, the beautiful Swabian Jura. Even before modern industrialisation reared its head, people here were smithing, forging and discovering. Heat shaped iron and steel. From a simple horseshoe to complex armour and weaponry.

The adjustable axle for use in track construction shown here is a beautiful reflection of this tradition in metal: weighty, precise and elegant.

Material and challenge

- Cutting in pre-hardened tool steel
- Knurling achieved eccentrically on the lathe
- Processing front and back at the same time in one cycle
- Complete processing on the lathe
- Concentric and eccentric machining in a single clamping setup

If you are looking for someone to manufacture and construct difficult and impossible machined parts, talk to Dreher GmbH. Machined parts that other providers can't handle: hard-to-cut materials, extreme geometries.

Dreher GmbH operates state-of-the-art machinery made by reputable German manufacturers and operated by well-trained and motivated people.

**Dreher CNC precision machined parts.
The difficult. The impossible. All of them.**

