



DREHER
PRÄZISIONSDREHTEILE GMBH

Case Study No.1

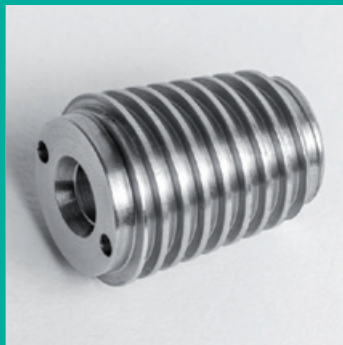
THUNDERBOLT AND LIGHTNING

Precision machined parts. The difficult. The impossible. All of them.

www.dreher-cnc.de

THUNDERBOLT AND LIGHTNING

Case Study No.1



Everyone surely senses the awesome power unleashed when nature stages its drama of thunder and lightning, that discharge of static electricity, across the sky. Many are fascinated by it, and most of us surely enjoy the security of our four walls and trust in the modern lightning protection which protects them. The combination shown here of two machined parts screwed one inside the other is part of a lightning protection device for electrical switching units. There is no second chance with this kind of part if a lightning strike should occur. We know it, our customer knows it. That's why he chose us.

Material and challenge

- Conical external thread combined with conical internal thread, made of magnet steel
- No individual thread tolerances but a tolerance across the complete component: overall length $\pm 0,1$ mm
- With a cone angle of 20° for the effective diameter tolerance this means $\pm 0,035$ mm
- This can only be produced with very clean surfaces in the threads

If you are looking for someone to manufacture and construct difficult and impossible machined parts, talk to Dreher GmbH. Machined parts that other providers can't handle: hard-to-cut materials, extreme geometries.

Dreher GmbH operates state-of-the-art machinery made by reputable German manufacturers and operated by well-trained and motivated people.

**Dreher CNC precision machined parts.
The difficult. The impossible. All of them.**

